



GP10
0701
0003

MACNAUGHT®

The experts in fluid technology

GP RAPID FLOW-FUEL PUMP

Thank you for purchasing a Macnaught Model GP Rapid-Flo Fuel Pump.

Please read and retain this instruction sheet to assist you in the operation and maintenance of this quality product. Take particular note of all warnings and safety messages.

DESCRIPTION

Your Macnaught GP Rapid-Flo Fuel Pump is an impellor type pump incorporating a gearbox for high output and easy operation. Materials used in the construction of this pump include Aluminum, Carbon Steel, Nitrile rubber and Viton rubber.

The features of your pump include long life, anti-static rubber hose with support springs, weather protected nozzle holder, nozzle and lockable handle. The locking device in the handle accepts 6mm diameter shackle padlock (not supplied).

An optional Model GB Fuel Filter Kit is available from your Macnaught dealer. This kit contains the filter assembly and fittings required to connect the filter to your pump. It features a 10-micron fast flow filter element to ensure only clean fuel reaches your valuable machinery.

IMPORTANT

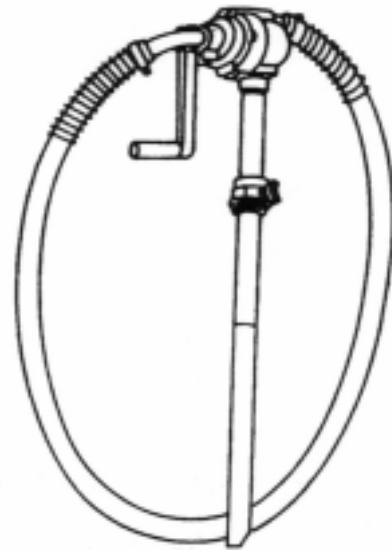
This pump is designed for use only with petroleum fuels, such as leaded/unleaded petrol, AV gas, diesel, kerosene and light mineral oils to SAE 30. Do not use this pump for dispensing fluids other than those for which it was designed. To do so may damage pump seals and/or other components and will void the warranty.

When using this pump in reverse care must be taken to prevent contaminants entering pump.

For pumping AVgas contact local aviation authorities for the correct aircraft refueling procedures.

ASSEMBLY

The carton contains the Pump Assembly, Suction tube with Bung Adaptor, hose Assembly and a plastic bag containing a Hose clamp, Crank Handle and this instruction sheet.



- A) Fit the Crank Handle to the pump drive Shaft and tighten grub screw.
- B) Apply thread sealant tape to both male threads of Suction Tube. Screw the tubes together firmly.
- C) Screw Suction Tube into Pump assembly. Use a pipe wrench to ensure a good tight fit.
- D) Position pump in drum or tank. Loosen Bung Adaptor into drum. Tighten Thumb Screw firmly.
- E) Slide Hose Clamp onto hose Assembly. Fit Hose Assembly to pump and tighten Hose Clamp.



WARNING

Handling flammable liquids is hazardous. There is the potential for an explosion and/or fire. Your personal safety, and the safety of others are at risk. It is your responsibility to know and follow all safety precautions when handling flammable liquids and ensure all equipment operators have adequate instructions concerning safe procedures.

Follow all recommended safety precautions, including those listed on page 2 of this instruction sheet, when handling flammable liquids such as petrol.

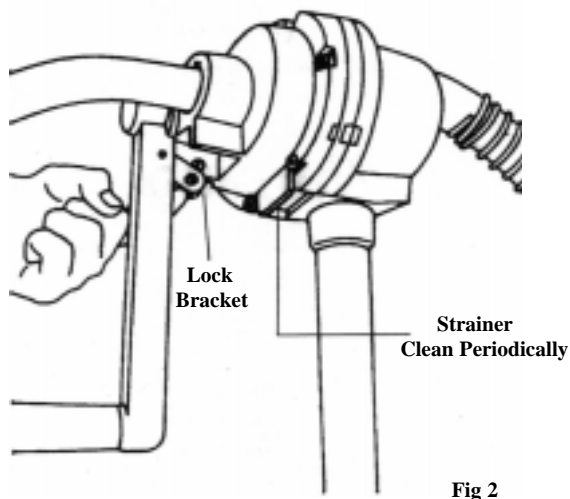
OPERATION

- A) Place Nozzle into fuel tank or approved receiving vessel. Rotate handle in a clockwise direction to prime the pump and maintain a continuous flow of fuel. Take care to avoid fuel splashing or spillage.
- B) Occasionally, rapid rotation of handle for a few revolutions may be required to prime the pump. Slow down once the pump is primed.

IMPORTANT

This pump is fitted with a 180-micron mesh strainer on the suction tube side of the pump to prevent foreign matter damaging the pump. If pumping in reverse, fit a strainer (stocking or similar) to the Hose Nozzle.

- C) If there is a kink in the hose, move one of the hose springs over the kink.
- D) When finished pumping, return the nozzle to the nozzle holder and move Crank handle vertically down. **Under certain conditions this pump may syphon.** Hose outlet must be above fluid level in drum or tank to prevent syphoning.
- E) To lock pump, push the lock bracket (located inside handle, see Fig 2) over the lug on underside of pump Body and fit padlock.
- F) The strainer fitted to this pump may require cleaning. Loosen the two screws securing the Strainer Retainer Plate. Swing the Retainer Plate down then remove Strainer.



WARNING - Pumping petrol and other flammable liquids is hazardous.

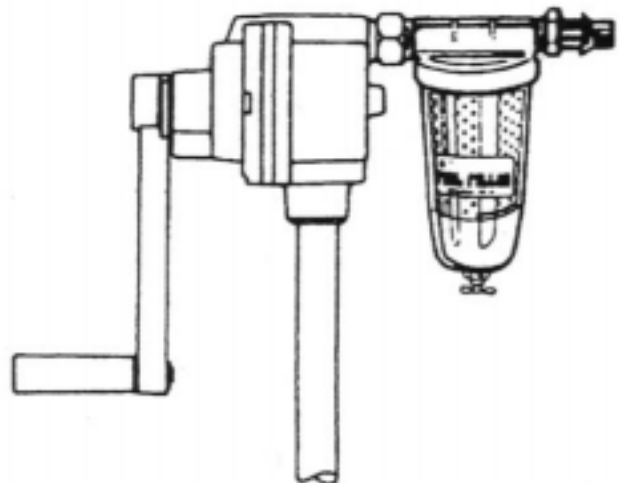
An explosion or fire can occur if there is a flammable vapour/air mixture and a source of ignition.

Follow all precautions listed below to reduce the risk of explosion or fire or injury.

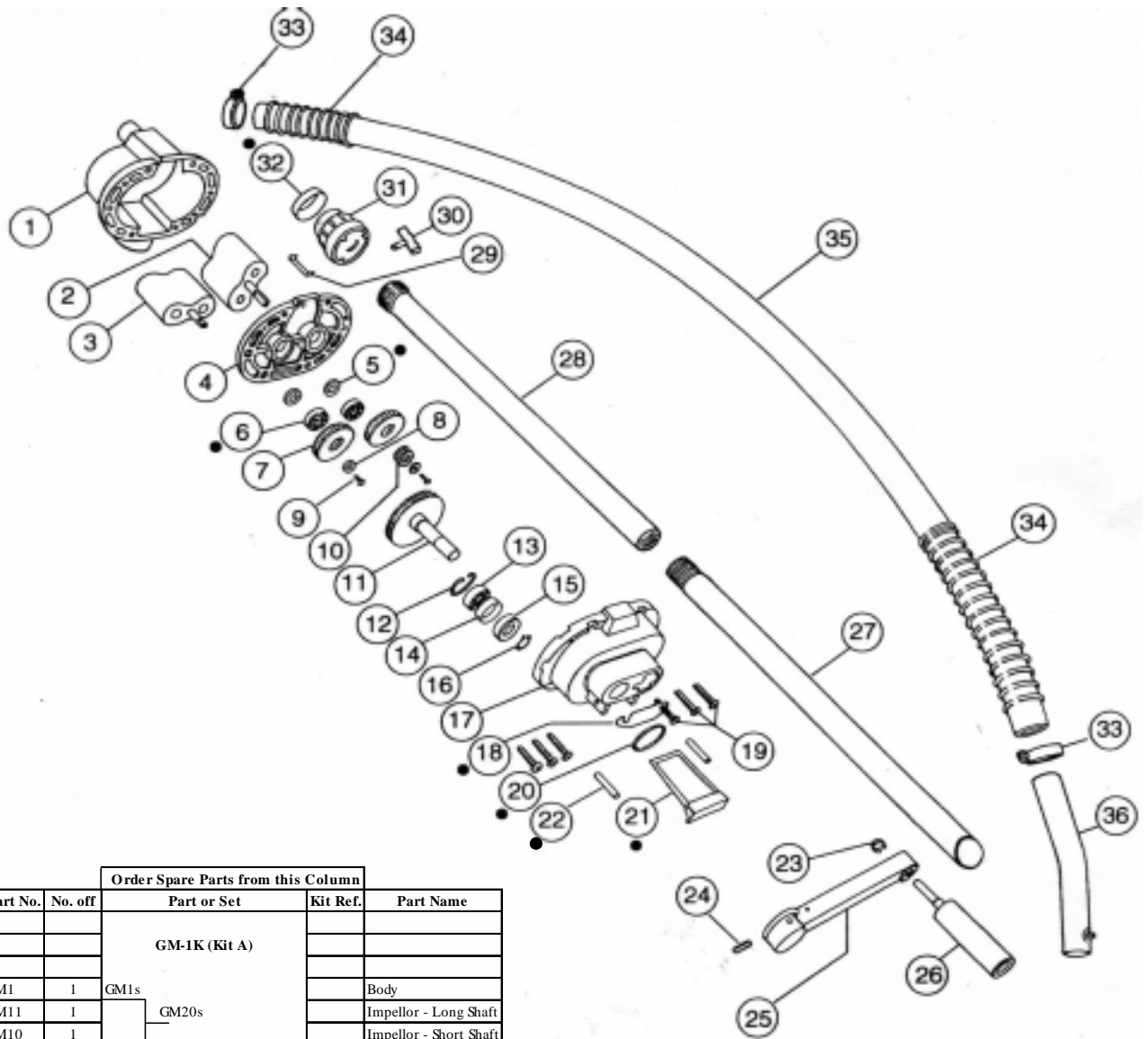
- * Pumping should only occur in well-ventilated areas. Never fill containers in confined areas, e.g. inside a vehicle. Do not operate pump in areas where vapours can accumulate.
- * Do not smoke while refuelling. Do not fill vehicle or equipment fuel tanks when the engine is running or hot. Keep fuel away from open flame or spark which could ignite the liquid.
- * Precautions are necessary to minimize the build-up of static charge, which could cause a spark.
- * Your Macnaught GP Rapid-Flo is supplied with an anti-static hose to reduce the opportunity for static charge to accumulate. Always use Macnaught anti-static hose when pumping petrol and other flammable liquids.
- * Fuel storage tanks and drums should be metal and grounded to earth. Ensure the floor or ground where fuel is stored or dispensed is and remains electrical conductive. Keep storage and dispensing areas clean because fuels, oils, resins, waxes or other materials may insulate storage tank/drum, and/or pump operator, and/or receiving vessel/equipment from earth.
- * Wear anti-static or conductive footwear and avoid wearing silk and/or synthetic clothing, unless treated with anti-static solution.
- * Avoid prolonged skin contact with petroleum fuels. Use of protective goggles, gloves and aprons is recommended in case of accidental splashing or spillage. Change saturated clothing and wash skin contact areas promptly with soap and water.

OPTIONAL GB FUEL FILTER

The GB Fuel Filter is particularly recommended for diesel fuel users. The Filter Kit is complete with all fittings to enable fast, simple installation and features a 10-micron filter element, see through bowl and draincock.



PARTS DIAGRAM



• Parts contained in Service Kit GM-1K

				Order Spare Parts from this Column	
Item No.	Part No.	No. off	Part or Set	Kit Ref.	Part Name
			GM-1K (Kit A)		
1	GM1	1	GM1s		Body
2	GM11	1	GM20s		Impellor - Long Shaft
3	GM10	1			Impellor - Short Shaft
4	GM2	1	GM2s		Bearing Housing
5	N624	2	GM-1K	A	Seal
6	N619	2	GM-1K	A	Bearing
7	GM8	2	GM23s		Impellor Gear
8	GM14	2			Retainer Washer
9	N94	2			Csk Hd Socket Screw
10	GM7	1			Pinion
11	GM12	1	GM12s		Drive Gear Assy
12	N262	1	N615s		Circlip
13	N615	1			Bearing
14	GM13	1			Spacer
15	N618	1			Bearing
16	N260	1			Circlip
17	GM3	1	GM3s		Cover
18	GM34	1	GM5s	A	Retainer Plate
19	N95	6			Cover Screw
20	BS123V	1			O'Ring (Viton)
21	GM5	1			Strainer
22	N347	2		A	Parallel Pin
23	N261	1	GM4s		Circlip
24	N576	1			Grub Screw
25	GM4	1			Crank Casting
26	GM19	1	GM40s		Grip
27	GM39	1			Lower Tube
28	GM40	1			Upper Tube
29	GR11	1	GR34s		Locking Plate
30	GR10	1			Clamp Screw
31	GR9	1			Bung Adaptor
32	GM41	1		A	Cover
33	N370	2	GM70s		Hose Clamp
34	HM47	2			Hose Spring
35	HM70	1			Hose
36	GM25	1			Nozzle



If carrying out maintenance on this pump, for your own protection, thoroughly drain the pump and hose before disassembly. Clean flammable liquids from components as they are removed from the pump. Follow precautions when handling flammable liquids - see page 2

TROUBLE SHOOTING GUIDE

TROUBLE	CAUSE	REMEDY
Pump feels hard to turn, or is hard to prime.	Blocked strainer (21)	Clean strainer (21) a) Loosen the 2 socket head screws holding strainer retainer plate (18) in place. b) Swing retainer plate away and remove strainer. c) Clean and re-fit strainer.
Pump is hard to prime.	Air leaking past suction tube (27,28) threads	Seal suction tube threads. a) Apply Teflon tape or similar thread sealant to both male threads on suction tube. b) Tighten lower tube to top tube and top tube to Pump body.
Pump leaks at cover (17) or drive shaft	Worn or damaged seals (5)	Replace seals (5). a) Remove 6 screws (19). b) Use a pin punch to remove 2 parallel pins (22). c) Remove cover assy. d) Gently tap bearing housing (4) to break seal to body (1) and remove bearing housing assy (4). e) Remove screws (9) gears (7) and impellers f) Push out old bearings (6) and seals (5). g) Reassemble using new bearings and seals IMPORTANT Apply a very thin film of "Form-a-Gasket" or similar between items (1) and (4). Too much will jam impellers. Align the timing marks on the Gears (7) when assembling to shafts. Apply a very thin film of "Form-A-Gasket" or similar between items (4) and (17).
Handle will not turn.	Foreign matter jamming impellers (2,3)	Disassemble pump as in "Replace Seals" above. Clean thoroughly. Smooth off any high spots with fine emery paper. Reassemble as above.

WARRANTY POLICY

Macnaught Limited ("Macnaught") warrants that Products purchased after 1st of July 1999 will be free from any defects caused by faulty materials or workmanship for a period of (5) years from the date of purchase of the product.

For componentry contained in the product which are subject to wear, the warranty period will be (12) months from the date of purchase of the product.

Provided that during the Warranty period:

- 1) Macnaught receives notice setting out full details of any defect in any product and details of the time and place of purchase.
- 2) The Purchaser, at their own cost returns the product to the nearest authorized Macnaught service center.

Macnaught shall, at its option repair or replace any product found defective by its inspection.

This warranty does not cover failure of parts or components due to normal wear or damage, which in the judgment of Macnaught, arises from misuse, abrasion corrosion, negligence, accident, substitution of non-Macnaught parts, faulty installation or tampering.

If Macnaught inspection discloses no defect in material or workmanship, repair or replacement and return will be made at customary charges.

Macnaught's liability and the purchaser's rights under this Warranty shall be limited to such repair or replacement and in particular, shall not extend to any direct, special, indirect or consequential damage or losses of any nature.

The foregoing warranty supersedes, voids and is in lieu of all or any other warranties.

Note:

This warranty does not form part of, nor does it constitute, a contract between Macnaught and the purchaser. It is additional to any warranty given by the seller of the products and does not exclude, limit, restrict or modify the rights and remedies conferred upon the purchaser, or the liabilities imposed on the seller, by any statute or other laws in respect of the sale of the product.